



Sampling Valves



Threaded Sampling Valves

Jacketed Valves

Actuated Valves

Injection Valves

Non-plugging designs

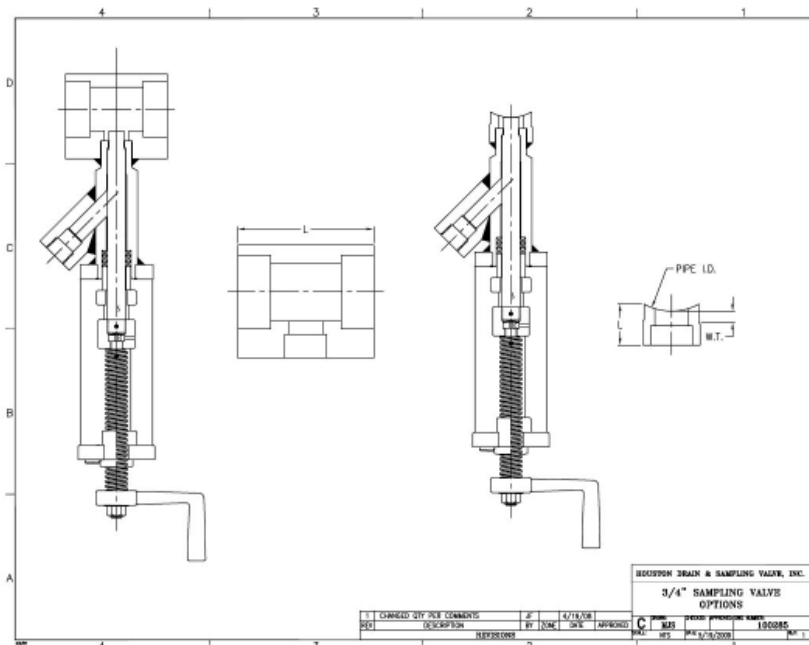


The primary purpose of a Sample valve is to be able to provide the operator with a clean sample direct from a pipeline or a vessel. The common principle in all three of our design types is that the port is filled with a plunger that prevents stagnant build up in between sample operations. We offer valves with the seals in different locations so that the design can be modified depending on your process needs. The Sample valve can also be used for a variety of purposes:



Common Accessories include:

- Fully welded integral jacket
- Actuators , Air motor, Air cylinder, Electric motor, Gear box
- Contoured half coupling ; To fit valve flush to the ID of pipe or vessel
- Piping Tee
- Sample bottle adapter
- Lock out tag out devices



- product sampling
- Injection Valve
- Vent Valve
- Drain Valve
- Kill solution valve
- Nozzle Rodding
- Bypass loop valve

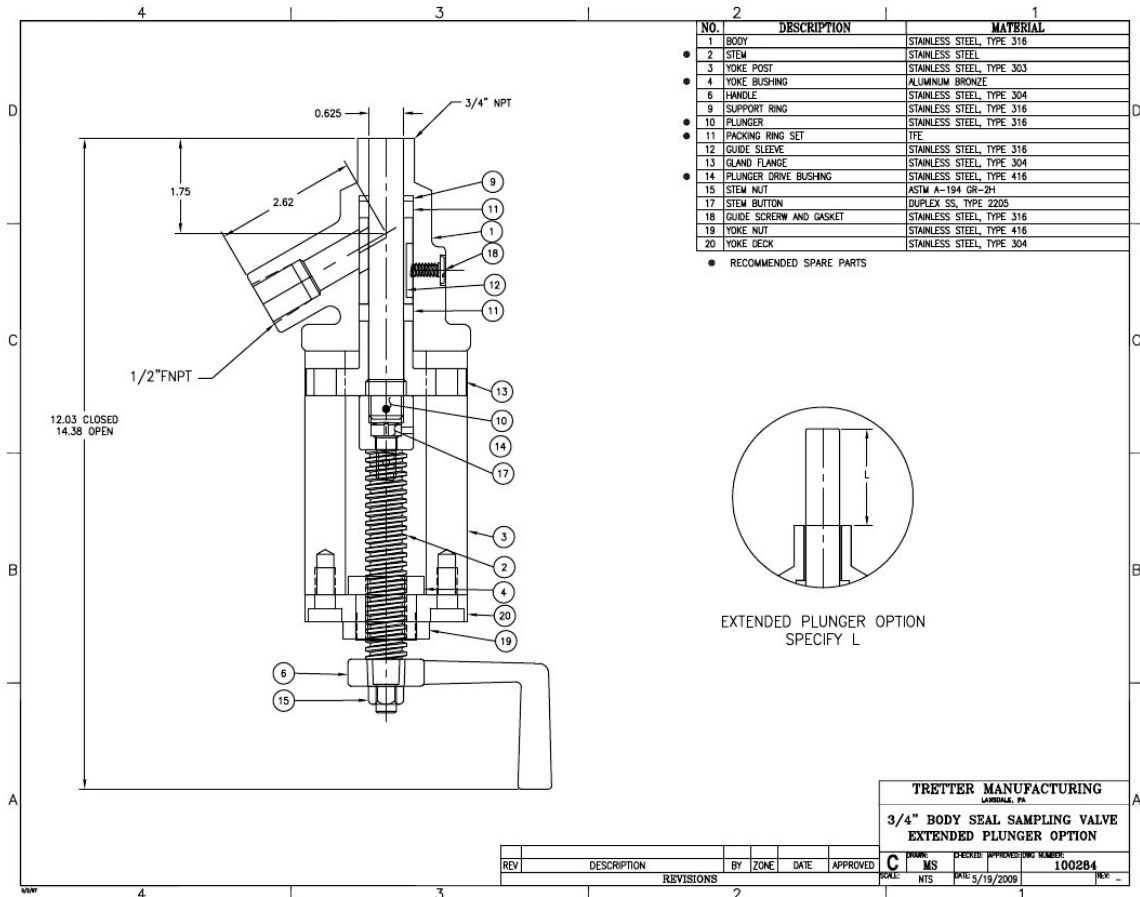
The drawing above shows the two most common methods of attaching Sample valves to the process line. Both are designed to place the valve seal as close as possible to the ID of the pipe. There are many other methods available such as butt or socket weld. Contact us to see if we can mount it the way that you envision it.

For injection service we will weld or flange the valve to the pipe so that the injection point is projected inside the pipe.

Body Seal Design

Sizes 1/2" to 1 1/2"

Smooth bore plunger, seatless design



Above example is shown is our Body seal Design it uses resilient seal rings (p/n 11) to seal against the plunger. It is shown as a 60 degree cast body design. It is also available as a 45 degree fabricated body design.

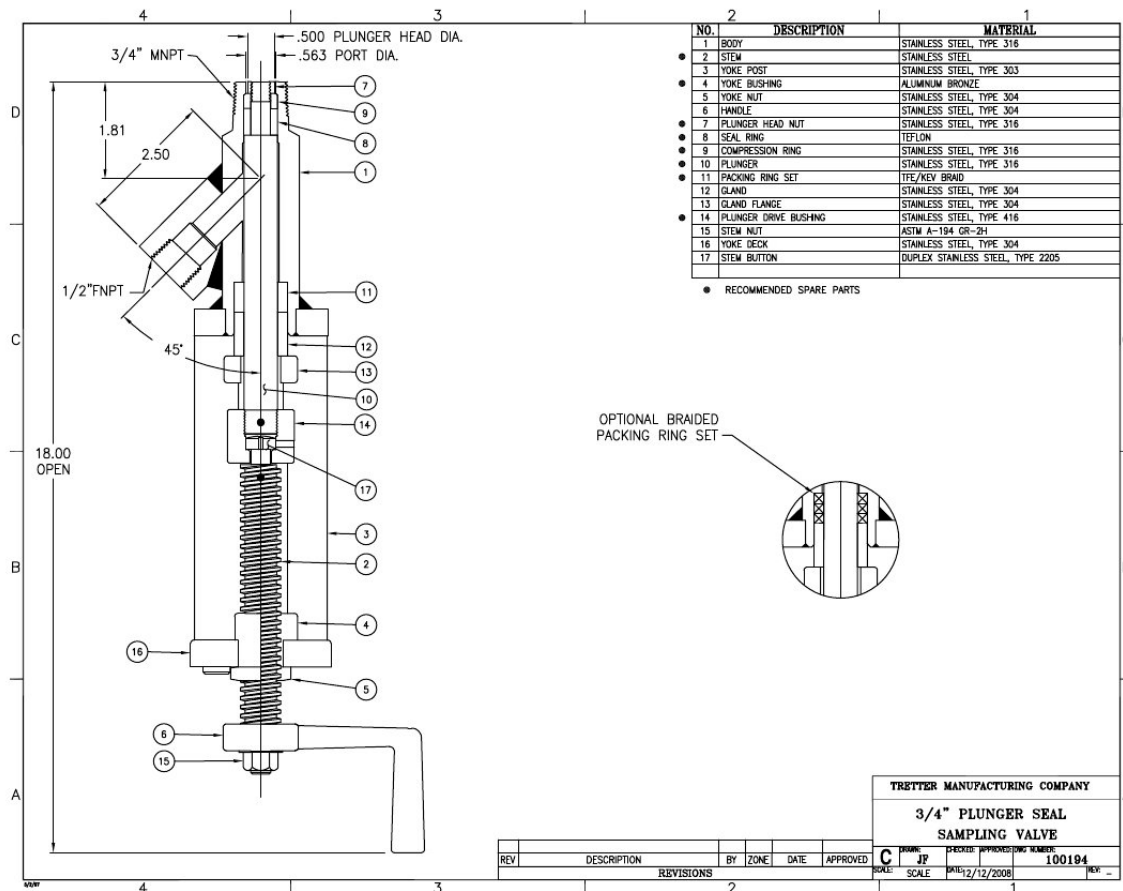
Metallurgy and options available on the back page of the brochure (page 8)

Size	Figure	PORT ID
1/4x 1/4	BS-002-M	.250
3/8x 1/4	BS-004-M	.312
1/2x 1/2	BS-005-M	.432
3/4x 1/2	BS-005-M	.437
3/4x 3/4	BS-007-M	.625
1x 3/4	BS-007-M	.625
1 1/2 x 1	BS-010-M	1.0

Plunger Seal Design

Sizes 1/2" to 1 1/2"

Seal on plunger, seated design

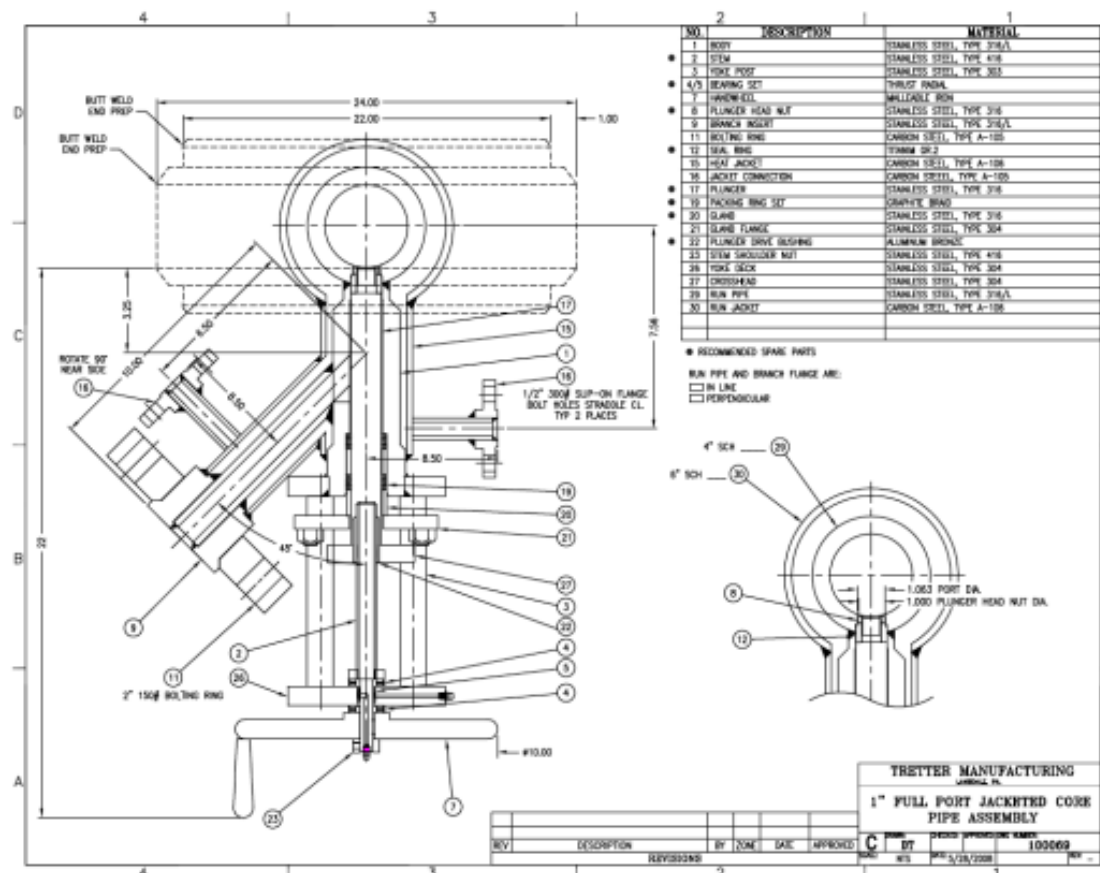


Above example is our Plunger Seal design it has the seal components on the plunger, so that when the plunger strokes to the open position, the seal parts are retracted out of the flow. It is shown as a 45 degree fabricated body design. It is also available as a 60 degree cast body design.

Metallurgy and options available on the back page of the brochure (page 8)

This Valve design lends it self to the extended body concept that allows custom fitting of the valve to your process connection. The valve port can be reduced to .125" for injection applications.

Size	Figure	Port ID
1/2 x 1/2	PS-005-M	.438
3/4 x 1/2	PS 005-M	.438
1 x 1/2	PS-005-M	.438
3/4 x 3/4	PS-007-M	.562
1 x 3/4	PS-007-M	.562
1 x 1	PS-009-M	.750
1 x 1	PS-010-M	.938
1 1/2 x 1	PS-011-M	1.062





Corepipe Assembly with Flanged Mounting Pad



Other special designs include

Sample Valve Wafer Valve, with Locking Device

Short Stroke Poppet Sample Valves

Options include:

- Position Indicating Switches
- Welded Integral Heat Jacket
- Actuation
- Bottle adapter
- Port diameters down to 1/8"
- Lock Out /Tag Out Designs
- Flush Port
- Custom Designs

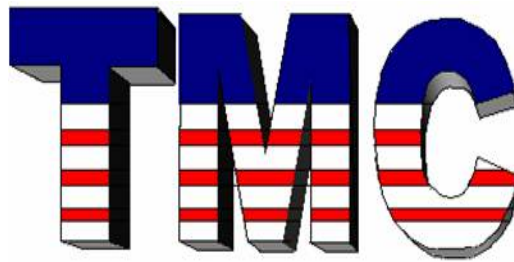
Metallurgy Availability:

All component material can be user selected

- 316/L SS
- Alloy C22
- Titanium
- Nickel
- Alloy 20
- 2205

Fabricated and cast bodies available in any castable / machinable materials that your process demands

Tretter Manufacturing Company



451 N. Cannon Ave
Lansdale, PA
19446
Phone : Cell 610-507 7783
Fax 800-859-8495
Email: trettermanco@aol.com
www.tmcvalves.com

Made in the USA