



Tretter Manufacturing
Company

LINE BLINDS

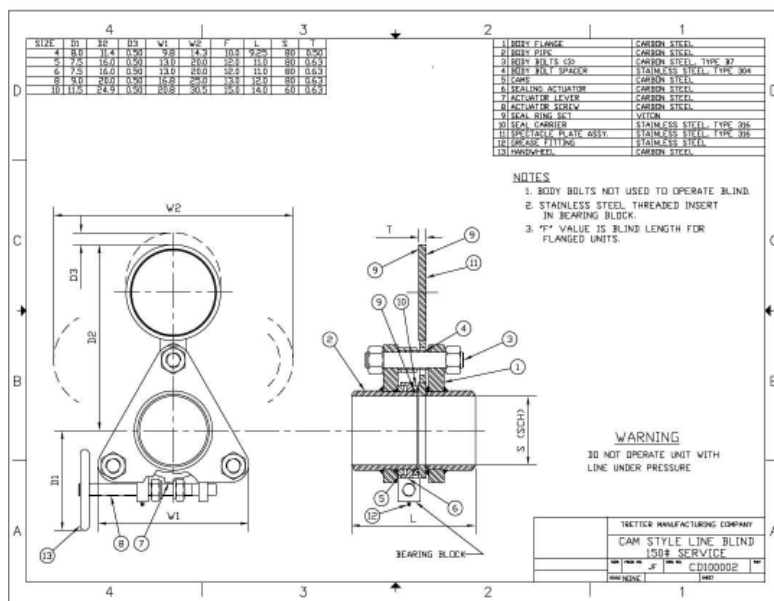


- **Positive Line Shut Off**
- **Line Condition Indicator**
- **Quick Change Device**
- **No Tools Necessary**

Cam Style Line Blinds

LINE BLINDS

Line Blinds are an assembly that makes the process of blanking off a line into a simple procedure. The Cam Style designs accomplishes the task without the use of any tools. The operator simply turns the handle and swings or slides the plate. The blind is designed to be an integral piping component. It is fully ANSI rated and involves no spreading of the pipe. Available in sizes 3/4" to 44". Available in classes to 1500# depending on size. The blind design can be either Swinging as shown below or Sliding in the larger sizes to support the weight.



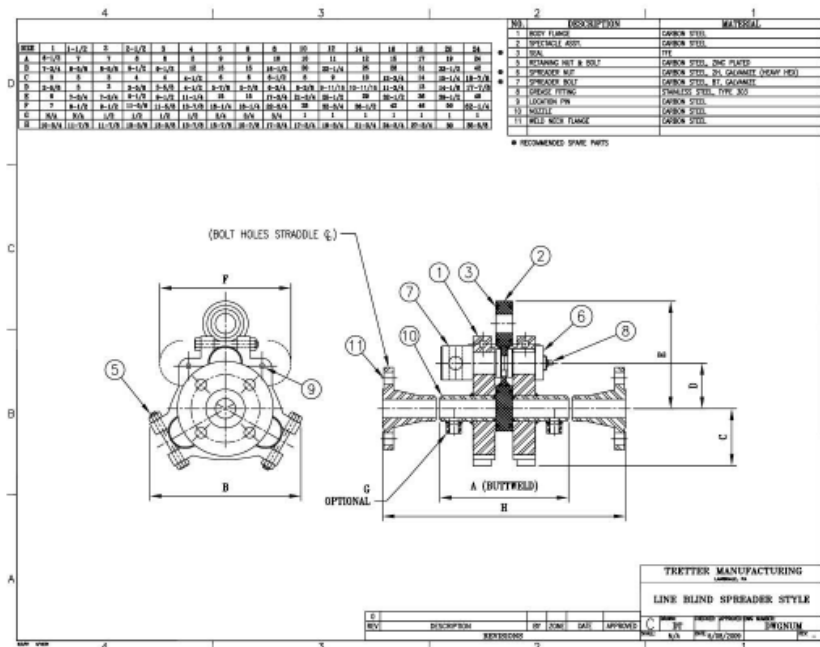
Common Applications:

Tank Farms
Steam lines
Cement Plants
Loading Stations
Feed lines
Mining
Pharmaceutical
Plants
Shipping terminals
Paper Mills
Cryogenic plants
Refineries
Pipelines
Pigging Stations
Cokers



Spreader Bolt Style Line Blinds

Spreader Style Line blinds use three or four Jack Bolts to spread the Flanges far enough to allow the Spectacle Plate to freely Swing or Slide from open to closed



Reasons to use Line Blinds

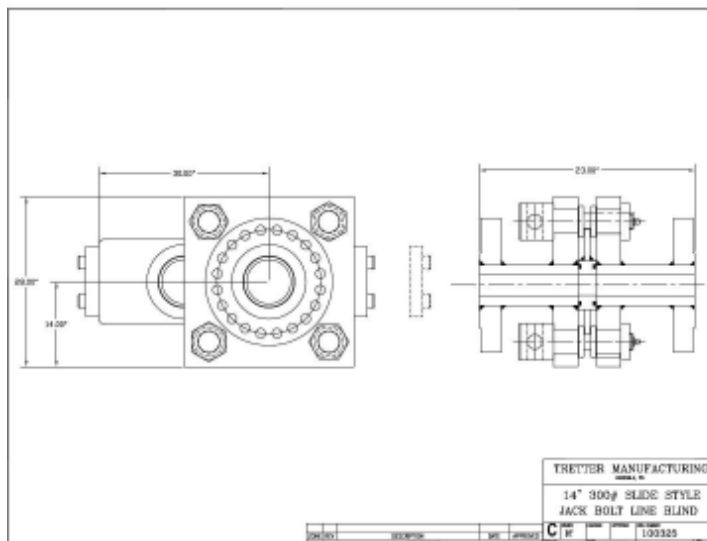
A: Since the blind is a solid plate, there is zero down stream leakage

B: A line blind gives a visual indicator of line condition

C: You can Blank a line with one person even in the largest Sizes

D: No tools required on Cam Style

E: A line blind can be changed in minutes saving labor costs



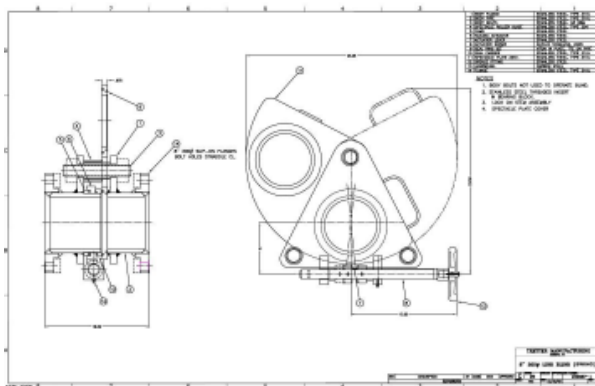
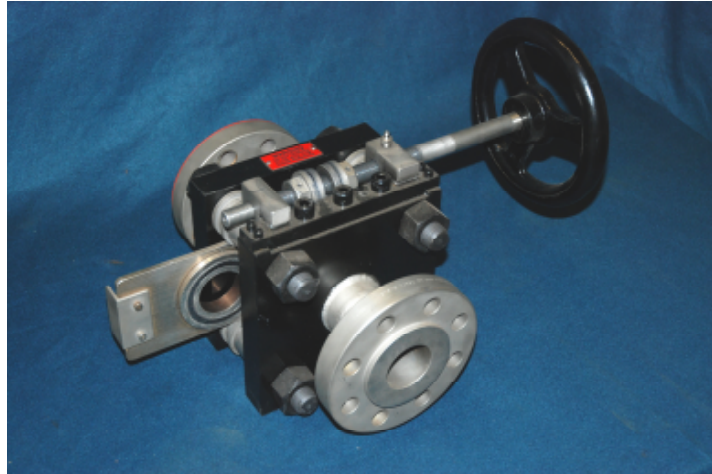
Special Design Line Blinds

Our Standard designs are meant to fit the most common applications, but we can best serve you if we are willing to try to understand your individual application. We are a fabrication shop and will vary dimension, materials and design to best fit your needs. Limited swing area, unusual materials, High temperature, Actuation choices, these are all elements that we can vary to make our line blinds fit into your process safety needs.

The photo at right is a high temperature, high pressure design

The design below left is a special swing design into a limited access area

The Photo bottom right is a chain driven spreader style



If our standard designs need to be altered to suit the process. Call us and we will work with you !

Phone : 610-507-7783

Fax 800-859-8495

Email: trettermanco@aol.com

www.tmcvalves.com