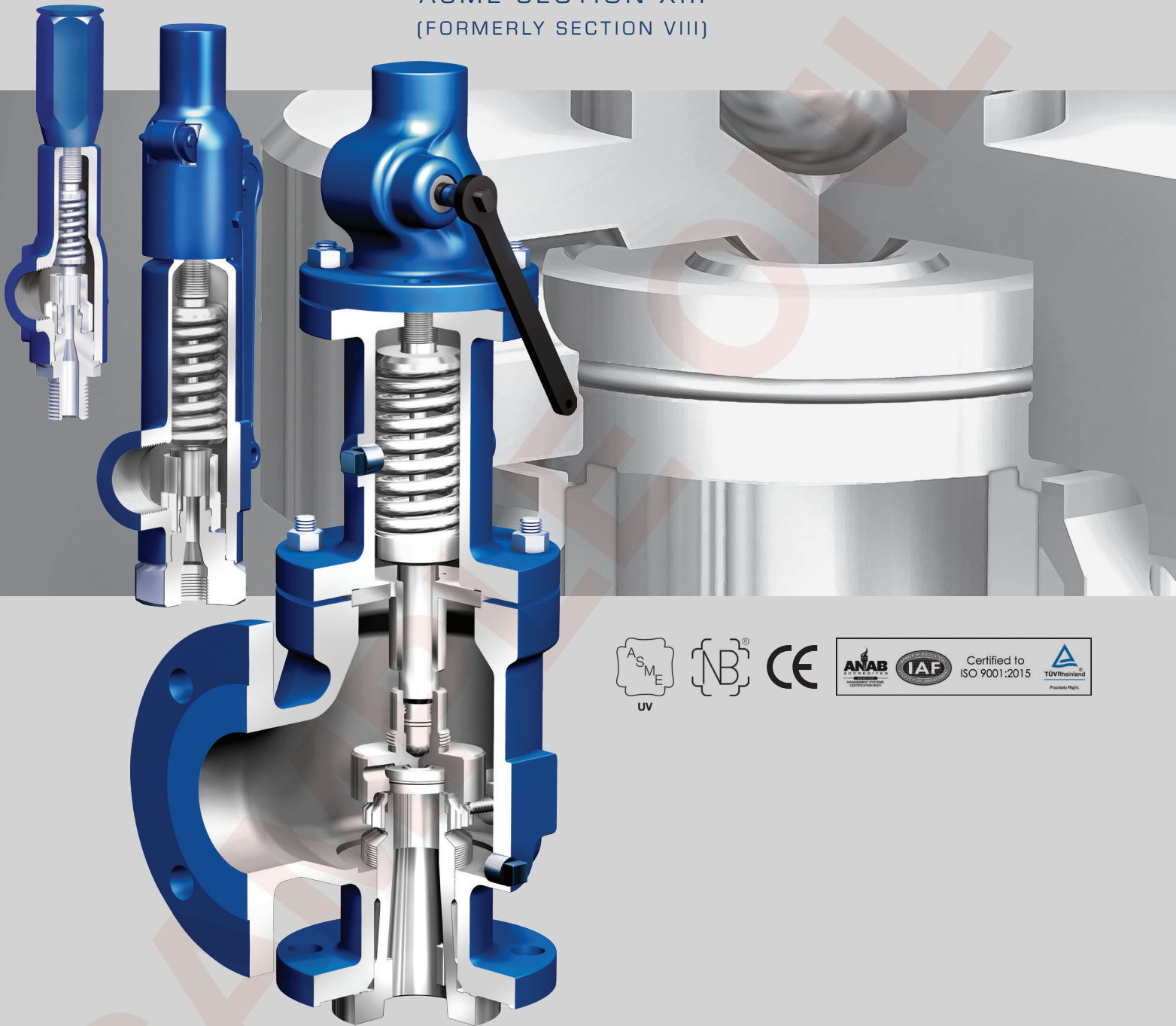


REYCO®

Full-Nozzle Safety Relief Valves

ASME SECTION XIII
(FORMERLY SECTION VIII)



LOCATIONS

2615 Arbor Tech Drive, Hebron, KY 41048
+1 859-525-9890

6833 Industry Drive, Indianapolis, IN 46219
+1 317-356-2000

EMAIL

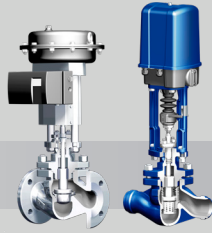
sales@trivaco.com

WEBSITE

www.trivaco.com

ARI Product Diversity

Control



Control Valves
STEVI®
Pneumatic & Electric Actuators
DP & PREMIO®



Mixing & Diverting Valves
STEVI® Smart



Pressure Control
PREDU®, PREDEX®, & PRESO®



Temperature Control
TEMPTRON®

Isolation



Bellows Seal Globe Valves
FABU®



Gland Seal Globe Valves
STOBU®

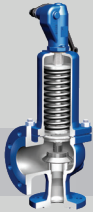


Triple Offset Butterfly Valves
ZETRIX®
Double Offset Butterfly Valves
ZEDOX®

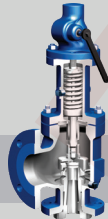


Soft Seal Butterfly Valves
ZESA® / GESA® & ZIVA®

Safety



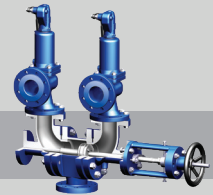
Semi-Nozzle
Safety Relief Valves
SAFE SN (ANSI & DIN)



Full-Nozzle
Safety Relief Valves
REYCO® R (API 526)



Safety Relief Valves
REYCO® RL (ANSI)



Changeover Valves
COMBI C (ANSI & DIN)

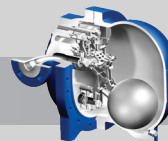
Steam



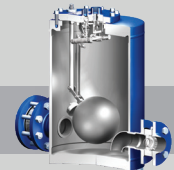
Steam Traps: Mechanical,
Thermodynamic, & Thermostatic
CONA®



Steam Traps:
with Multi-Valving Technology
CONA® All-in-One

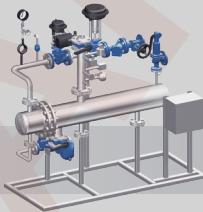


Mechanical Pump Trap
CONA® P

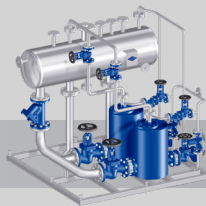


Mechanical Condensate Pump
CONLIFT®

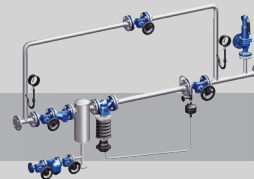
Systems



Heat Exchanger Packages
ENCOsys®



Condensate Return Systems
CORsys®



Pressure Reducing Stations
PREsys®



Flash Steam Systems
FLASHsys®