



APPLIED SENSOR TECHNOLOGIES

A DIVISION OF UNITED ELECTRIC CONTROLS

- THERMOCOUPLES
- RTDs
- THERMOWELLS & PROTECTION TUBES
- TRANSMITTERS
- THE SENSOR BOX™



APPLIED SENSOR TECHNOLOGIES

DIVISION OF UNITED ELECTRIC CONTROLS



Applied Sensor Technologies is a major manufacturer of thermocouples, RTDs, thermistors and other types of temperature sensor assemblies. ISO 9001 certified and a leading practitioner of Lean Manufacturing methods, AST focuses on building high-quality, high-reliability products for the industrial market. Our expertise covers a wide variety of applications, from lab equipment to road-making equipment, from the blast furnace to the blast chiller, and everything in between.

INNOVATIVE DESIGN

- Cost-effective solutions that exceed customer requirements
- Fit-for-purpose by application

RAPID DELIVERY

- Lean manufacturing for maximum productivity and reduced waste

UNCOMPROMISING QUALITY

- ISO 9001 certified
- Customer-first approach through service, delivery and value
- US manufacturing

GLOBAL PRESENCE

- Worldwide factory support
- More than 150 distributors



While United Electric Controls works towards full RoHS compliance with all of our products, most equipment and applications that include UE products are in RoHS exempt Category 9. If you are planning to install UE products in equipment that needs to comply, please contact us immediately so we may assist in your compliance goals.



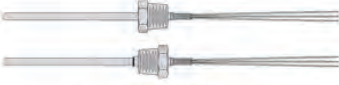
CONTENTS


SERIES	DESCRIPTION	PAGE
AST-WP	Thermocouples & RTDs with Weatherproof Terminal Heads	4
AST-XP	Thermocouples & RTDs with Explosion-Proof Terminal Heads	4
AST-SW	Thermocouples & RTDs with sheath and stripped ends or plug	5
AST-PM	Thermocouples & RTDs with sheath and various process mounts	5
AST-BT	Beaded thermocouples types K, R, S & B	6
AST-TW	Thermowells & Protection Tubes	6
AST-AC	Transmitters and other accessories	7
AST-SB	The Unique Sensor Box™ program	7
AST-SPL	Special Products for the Process Industries	8 & 9
AST-T	Special Products for the OEM	10
One Series	Temperature Models	11
Contact Information	Domestic and International Sales Contact Information	11


AST Product Selector (www.appliedsensortech.com/productselector)


[Reset](#) [Request Quote](#) [Help Menu](#) [Close Window](#)

Applied Sensor Technology Product Selector
 RTD
 Sheath with leadwire
 Process-mounting hardware


RT23I/23P/24
[Sheath with process fitting](#)


RT-32
[Sheath with washer](#)


RT-41
[Mounting lug](#)


RT-39
[Sheath with weld pad](#)

[Web Copyright Notice](#) | [Web Legal Notice](#) | [Terms & Conditions](#)
[Home](#) | [Company](#) | [What's New](#) | [Products](#) | [Contact Us](#) | [Distributor Locator](#) | [Site/Search Map](#)

180 Dexter Avenue
 P.O. Box 9143
 Watertown, MA 02471-9143 USA
 Tel: (617) 926-1000

© 2015 - 2001 Applied Sensor Technologies
 A Division of United Electric Controls
webmaster@usonline.com

Select Language

Powered by [Cloud](#) Translate

Visit the AST website at www.appliedsensortech.com

Visit AST's Product Selector: www.appliedsensortech.com/productselector

Series AST-WP

Thermocouples and RTDs with Weatherproof Terminal Heads



FEATURES:

- Available in aluminum, epoxy-coated, 316 stainless steel, cast iron, polypropylene, and nylon heads
- Integral terminal block wiring or transmitters available
- Sensors with fixed lengths, spring-loaded, or flexible armor
- Available for single or dual J, K, E, T, N, R, S, and B thermocouples and a variety of RTDs



Series AST-XP

Thermocouples and RTDs with Hazardous Location Terminal Heads

FEATURES:

- Available in aluminum, epoxy-coated, or 316 stainless steel heads
- Class 1, Division 1, Groups B, C, and D
- Integral terminal block wiring or transmitters available
- Sensors with fixed lengths or spring-loaded
- Available for single or dual J, K, E, T, and N thermocouples and a variety of RTDs



Series AST-SW

Thermocouples and RTDs with sheath and stripped or terminated ends

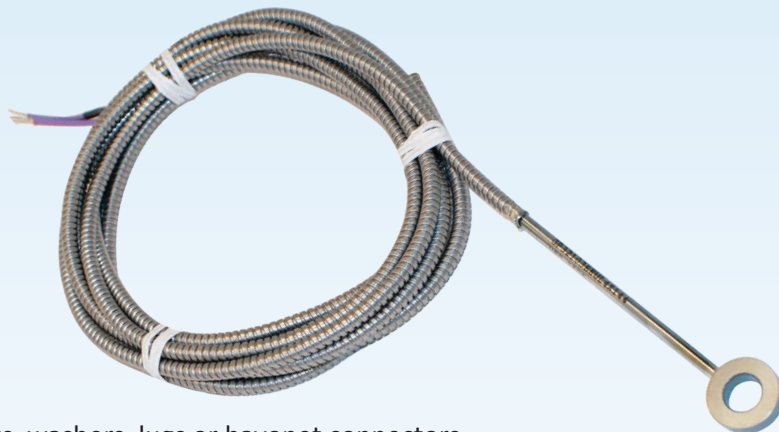
FEATURES:

- Variety of wire and cables available
- 316 stainless steel or Inconel sheaths
- Stainless steel armor available, with or without waterproof PVC or Teflon coating
- Terminated with stripped ends or a variety of connectors, plugs and crimped terminals
- Compression fitting or weld-pads can be added for process mounting
- Available for single or dual J, K, E, T, and N thermocouples and a variety of RTDs



Series AST-PM

Thermocouples and RTDs with sheath and various process mounting options



FEATURES:

- Fixed mounting via NPT fittings, washers, lugs or bayonet connectors
- Typically 316 stainless steel
- Stainless steel armor available, with or without waterproof PVC or Teflon coating
- Terminated with stripped ends or a variety of connectors, plugs and crimped terminals
- Available for single or dual J, K, E, T, and N thermocouples and a variety of RTDs

Series AST-BT

Beaded Thermocouples with or without terminal heads

FEATURES:

- 8, 14 or 24 AWG wire
- Alumina or mullite beads
- Ungrounded, exposed or twisted-exposed junctions
- Assemblies with head and protection tube, or element only
- Available for single or dual K, R, S, and B thermocouples



Series AST-TW

Thermowells and Protection Tubes



FEATURES:

- A complete line of solid-bore thermowells and manufactured protection tubes in a variety of materials and constructions
- NPT, Flanged, weld-in, and socket-weld process mounting
- Protection Tube materials: alumina, mullite, Sialon, silicon carbide, LT1, 316 SS, 304 SS, Inconel and many other materials available

Series AST-AC

Transmitters and various accessory items



FEATURES:

- Transmitters with 4-20 mA or HART® outputs.
- Replacement terminal heads and blocks
- Plugs and jacks
- Compression fittings, spring-loaded fittings and bayonet adaptors

Series AST-SB

The Unique Sensor Box™ concept



FEATURES:

The SENSOR BOX™ is a rugged toolbox containing all of the parts and tools to quickly and easily build the sensor you urgently need. It is:

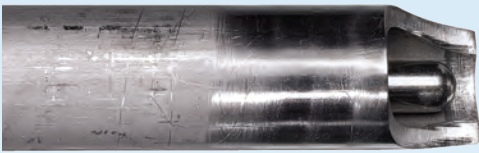
- Flexible - adaptable to most process plants:
 - Power
 - Chemical
 - Refining
 - Offshore Oil Production
- Comprehensive - It can include a variety of sensor types and hardware of your choice.
- Self-contained - Everything you need to build the right product is at your fingertips.
- Industrial - The toolbox and tools are rugged, designed for hard duty.
- Easy to use - Complete, easy to follow instructions are included.

Series AST-SPL

Unique designs to specifically meet your application

FEATURES:

- “Standard” designs not working for you? From challenge to solution, you can count on AST to listen to your requirements and use our 50 years’ of experience to come up with an answer.
- Conditions that are abrasive/erosive, corrosive, shock and/or high vibration?
- Special designs for multi-points, heat tracing, flow computer inputs and countless other applications!
- Let us work with you to solve your toughest challenges!



Series AST-SPL Cont.

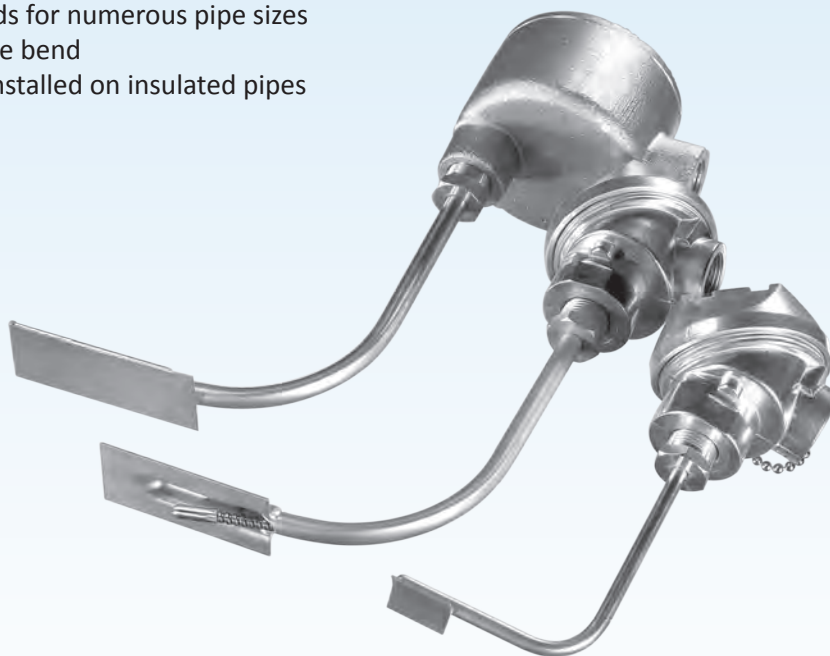
APPLICATION: GAS SENSOR FOR FLOW METERS

- 3 or 4 wire RTDs
- PVC or Teflon coating armor for weather proof installation
- Teflon compression fitting for vibration and electrical isolation



APPLICATION: HEAT TRACE RTDs

- WP and XP models
- Replaceable RTD elements
- Weld pads for numerous pipe sizes
- 90 degree bend
- Can be installed on insulated pipes



Series AST-T

Special designs for the OEM

FEATURES:

- From concept through production, we work closely with our customers to meet their design and cost targets.
- Designed specifically for the application
- Thermocouple, RTD, thermistor and IC-based designs.



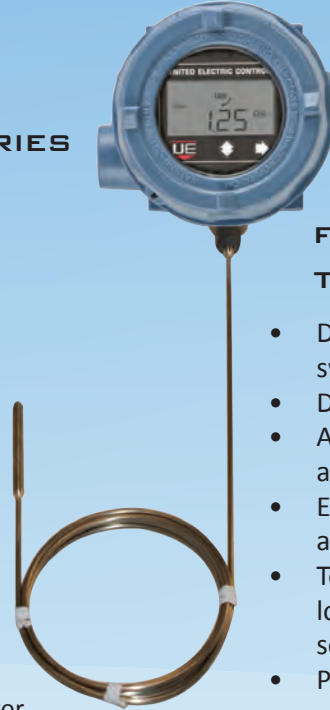


One Series Temperature Models



FEATURES FOR THE ONE SERIES SAFETY TRANSMITTER:

- Safety Transmitter with addition of local switching
- Certified for use in safety systems per IEC61508
- Explosion-Proof housing, worldwide approvals
- Temperature models with spring-loaded, fixed length or remote sensor
- Pressure and DP also available



FEATURES FOR THE ONE SERIES:

- Drop-in upgrade for mechanical switches
- Digital display and diagnostics
- Adjustable set point with 100% adjustable deadband
- Explosion-Proof housing, worldwide approvals
- Temperature models with spring-loaded, fixed length or remote sensor
- Pressure and DP also available

Visit UE's Product Selector: www.ueonline.com/productselector

U.S. SALES OFFICES

United Electric Controls
31 Old Stage Road
Hampton Falls, NH 03844
Phone: 617-899-1132
email: northeastsales@ueonline.com

United Electric Controls
5829 Grazing Court
Mason, OH 45040
Phone: 513-535-5486
email: midatlanticsales@ueonline.com

United Electric Controls
102 Salazar Court
Clayton, CA 94517
Phone: 925-408-5997
email: westcoastsales@ueonline.com

United Electric Controls
33018 Weatherby Court
Fulshear, TX 77441
Phone: 832-457-6138
email: southwestsales@ueonline.com

United Electric Controls
27 Summit Terrace
Sparta, NJ 07871
Phone: 973-271-2550
email: easternsales@ueonline.com

INTERNATIONAL OFFICES

CHINA - Shanghai
United Electric Controls
Room 1011, 10th Flr,
Huai Hai Zhonghua Building
No. 885, Renmin Road, Luwan District
Shanghai 200010, P.R. China
Phone: +8621-6255 8059
email: chinasales@ueonline.com

CHINA - Beijing
Block B, Room 1102,
Caizhi International Building, No. 18
Zhong Guancun East Road
Haidian District,
Beijing, 100080 China
Phone: +86 (-10) -62800956
email: beijingsales@ueonline.com

Latin America/Caribbean
United Electric Controls
1806 NE 19th Street
Fort Lauderdale, FL 33305
Phone: 1 754 779-7176
email: latinamericasales@ueonline.com

ASIA-PACIFIC
United Electric Controls, Far East
No. 1-2-2, 2nd Floor
Jalan 4/101C
Batu 5, Jalan Cheras
56100 Kuala Lumpur, Malaysia
Phone: 603-9133-4122
email: fareastsales@ueonline.com

EUROPE
United Electric Controls
05-806 Komorow
Kujawska 5, Poland
Phone: +48 22 499 4804
email: easterneuropesales@ueonline.com

INDIA
United Electric Controls
402, Aries Avenue - I,
58-United Colony
Sama, Baroda, India - 390008.
Phone: +91-265-3191711
email: indiasales@ueonline.com

RUSSIA & SCANDINAVIA
United Electric Controls, Moscow
Kuusinena str., 19A, Office 310
Moscow, 125252, Russia
Phone: +7 (095) 792-88-06
email: russiansales@ueonline.com

DIVISIONS

Precision Sensors
50 Seemans Lane
Milford, CT 06460
Phone: 203-877-2795
Fax: 203-877-8752
www.precisionensors.com

Applied Sensor Technologies
180 Dexter Avenue, P.O. Box 9143
Watertown, MA 02471-9143
Telephone: 617-923-6966
Fax: 617-926-8411
www.appliedsensortech.com

CANADA OFFICES

45 Olivia Marie Road
Brampton, Ontario
Canada L6Y 0M4
Phone: 905-455-5131
FAX: 905-455-5131
email: canadasales@ueonline.com

Visit AST's Product Selector: www.appliedsensortech.com/productselector

United Electric Controls has a rich history of over 80 years in providing protection for plant assets, people and the environment. Our pressure and temperature instrumentation is designed specifically to meet the rigors of harsh and hazardous alarm and emergency shutdown applications and includes certified safety transmitters per IEC 61508. UE serves the Chemical & Petrochemical, Power, Water & Wastewater and Oil & Gas industries, as well as many other challenging OEM applications.

Call at +1 617-923-6966 to speak to one of our knowledgeable representatives who can help answer your application questions. Please visit www.appliedsensortech.com to use our product selector, find one of our 150 worldwide distributors, and for further information about United Electric Controls and its products.



UE UNITED ELECTRIC
CONTROLS
180 Dexter Ave, P.O. Box 9143
Watertown, MA 02471-9143 USA
Phone: +1 617 926-1000
Fax: +1 617 926-2568
www.ueonline.com