

# REOTEMP<sup>®</sup>

## INSTRUMENTS



## MECHANICAL TEMPERATURE

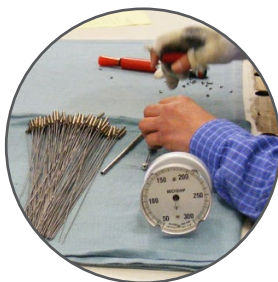
**REOTEMP** is a globally recognized ISO 9001:2008 manufacturer of temperature and pressure instrumentation. **REOTEMP** sells through a mature distribution network that reaches all 50 states and 30 countries worldwide.

Our reputation is built on high quality products, quick standard lead times, and exceptional customer support. We're dedicated to providing our customers with complete satisfaction, from the first phone call to the design and quality of the instrument they receive.



*Measuring your world since 1965*

# THE REOTEMP DIFFERENCE



Manufacturing in the U.S.A.  
since 1965

When you buy from REOTEMP, you're supporting an American Manufacturer who has been making bimetal thermometers since 1965. REOTEMP has strived to provide not only quality products but also powerful tools like the Online Product Configurator which makes specifying bimetals (and even a mating thermowell) quick & easy. REOTEMP offers a variety of customization options such as Hi-Vis™ Dials, Intermediate Stem Lengths, SS Tags, Color Bands, Private Logo Dials, and more (all with a 3-5 day standard lead time). Same day and next day expedites are also typically available to meet urgent needs. Need a certification or calibration certificate? REOTEMP can do that as well, in 3-5 days.

## QUICK LEAD TIMES



TEMPERATURE PRODUCTS	STANDARD	EXPEDITED
Bimetal Thermometers	3-5 Days	Same Day!
Dual Mode Thermometers	3-5 Days	Same Day!
Thermowells	Stock	Same Day!
Sanitary Thermometers	5-7 Days	Same Day!
Vapor Thermometers	3 weeks	5-7 Days
Gas Thermometers	3 weeks	5-7 Days

## CUSTOM CONFIGURATION IN 3-5 DAYS

PRIVATE  
LOGO



INTERMEDIATE  
STEM LENGTHS



COLOR BANDS



LENS

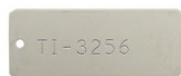
Laminated Safety Glass,  
Tempered Glass,  
Polycarbonate, Acrylic



MIN./MAX.  
POINTER



TAGS



COLOR PIE

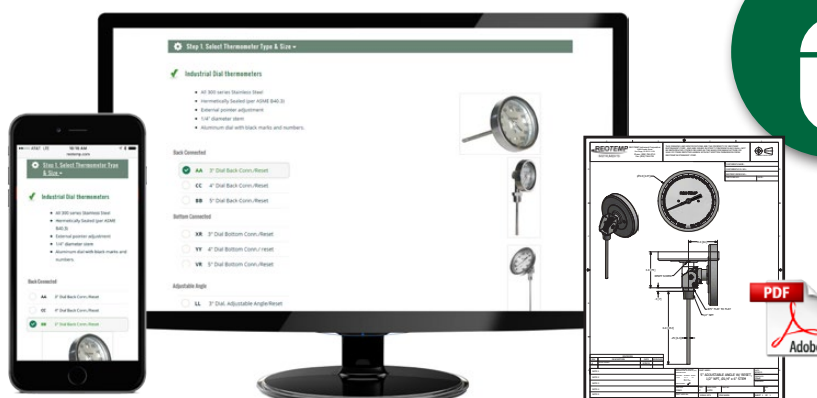


CALIBRATION/  
CERTIFICATION



## ONLINE PRODUCT CONFIGURATORS

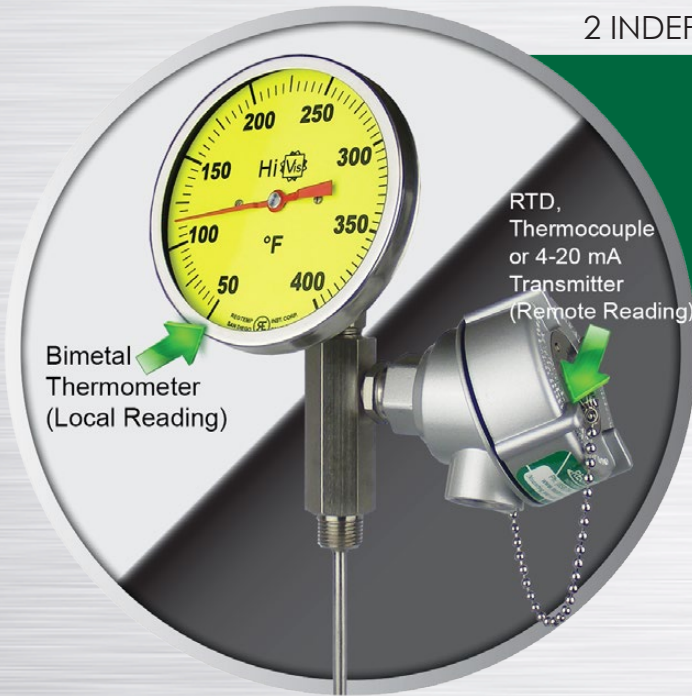
Our online product configurators are powerful tools that make specifying temperature instrumentation quick & easy. Now you can create part #s, see list pricing, & GENERATE CUSTOM ENGINEERING DRAWINGS IN SECONDS!





# DMT | DUAL MODE THERMOMETER

2 INDEPENDENT SENSORS IN 1 STEM



- Mechanical Reading Locally and an Electrical Reading Remotely
- If One Fails, the Other is Usually Unaffected
- Redundant Temperature Sensing Increases Safety

5-7 Days\* Std. Lead Time

This product is available in a mil-spec approved model that is built to withstand tough shock and vibration environments (MIL-STD-167-1A and MIL-S-901D).



Available



## SMALL DIAL



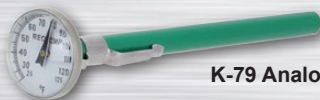
**Model H**  
(2 3/8" Dial)



**Model G**  
(1 11/16" Dial)



**Model Q**  
(1 5/32" Dial)



**K-79 Analog Dial Model**

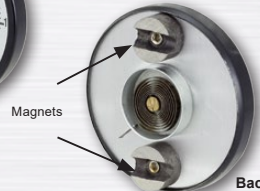
## FEATURES/BENEFITS

- Standard and Custom Stem Lengths
- OEM Logo Dials/Custom Dials
- One Year Warranty

3-5 Days\* Std. Lead Time



**Surface**  
(2" Dial)



Back View

## THERMOWELLS

Threaded



Flanged



Weld-in



Sanitary  
(3-A Certificate Included)



## AVAILABLE OPTIONS

- Wake Frequency
- Hydrostatic Test
- Full Penetration Welding
- NACE Certified



HUGE STOCK  
AVAILABLE

# INDUSTRIAL THERMOMETERS

REOTEMP's Bimetal Thermometers are reliable and accurate temperature sensors requiring no electricity or wiring. They can be recalibrated with a turn of the calibration screw on the back of the dial. A variety of options are available for your specific process needs.



Adjustable Angle



Bottom



Back

## FEATURES/BENEFITS

- Made to ASME B40.3 Specifications
- Accuracy  $\pm 1\%$  Full Scale (ASME B40.3)
- All Stainless Steel Construction
- Hermetically Sealed (ASME B40.3)
- Silicone Fillable for Vibration
- Standard External Reset for Easy Calibration
- OEM Logo Dials/Custom Dials
- Navy Style Thermometer Available
- Hi-Vis<sup>TM</sup> Dials Available
- White Dial Available
- Five Year Warranty

3-5 Days\* Std. Lead Time



Available



## HIGH VISIBILITY DIALS



## WITHOUT THE Hi-Vis<sup>TM</sup> DIAL

- ✗ MISREAD
- ✗ MISIDENTIFIED
- ✗ OVERLOOKED

## WITH THE Hi-Vis<sup>TM</sup> DIAL

- ✓ Easy to Read in Low Light and at Long Distances
- ✓ Locate Critical Process Gauges
- ✓ Identify Areas of Higher Importance





## SANITARY



### FEATURES/BENEFITS

- Made to ASME B40.3 Specifications
- Accuracy  $\pm 1\%$  Full Scale (ASME B40.3)
- All Stainless Steel Construction
- Hermetically Sealed (ASME B40.3)
- Silicone Fillable for Vibration
- Standard and Custom Stem Lengths
- Standard External Reset for Easy Calibration
- Tri-Clamp® Design for Fast Installation and Removal
- 3-A Sanitary Standards
- 3-A Conformance Certificate Included
- OEM Logo Dials/Custom Dials
- Hi-Vis® Dials Available
- Five Year Warranty

**7-10 Days\* Std. Lead Time**



Tri-Clamp® is a registered trademark of Alpha Laval, Inc.

Available

## GAS



### FEATURES/BENEFITS

- Accuracy  $\pm 1\%$  Full Scale (ASME B40.3)
- Can Handle a Wide Temperature Range Up to 1200°F
- Wide Variety of Wall, Panel, and Direct Mounting Option
- Capillary Lengths Up to 99 Feet
- Standard and Custom Stem Lengths
- One Year Warranty

**3 Weeks\* Std. Lead Time**

## VAPOR



### FEATURES/BENEFITS

- Accuracy  $\pm 1$  Scale Division (Upper 2/3 Scale)
- Ideal for Remote Reading, such as Panel Installation
- Capillary Lengths from 1 to 100 Feet
- Stainless Steel Sealed Construction
- Variety of Flanged or U-Clamp Mounting Options
- Brass and 316SS Thermowells for Vapor-Actuated Bulbs Available

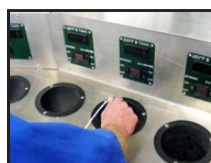
**3 Weeks\* Std. Lead Time**

\* Standard lead time to ship from REOTEMP facility. Contact factory for expedites and for verification of lead time on all orders.

# CALIBRATION



REOTEMP uses a combination of fixed point calibration cells and fluid-filled calibration equipment to perform calibrations from -196°C to 600°C (-320°F to 1112°F). We provide calibration for metrology and industrial customers in nearly every process market. Our friendly and knowledgeable technicians will ensure your sensors have the accuracy required for your application.



# CERTIFICATION

- Certification of Conformance (*General Conformance to Published Specs*)
- Certification of Calibration (*Includes Logged Points and Sticker*)
- 3-A Sanitary Certificates
- Compliance and Material Certs for All Wetted Components

# SAMPLE CUSTOMER LIST

## OIL, GAS, AND REFINING



## PHARMA/BIOTECH



## GOVERNMENT



## INDUSTRIAL



## UTILITY/MUNICIPALITY



## ENGINEERING & CONSTRUCTION



## FOOD & BEVERAGE



## MILITARY



# CONTACT

U.S. 800-648-7737

Int'l 00-1-858-784-0710

Fax 858-784-0720

**REOTEMP®**  
INSTRUMENTS

*Measuring your world since 1965*

10656 Roselle St.  
San Diego, CA 92121

Email [sales@reotemp.com](mailto:sales@reotemp.com)

[www.reotemp.com](http://www.reotemp.com)

BIMETLC-0316